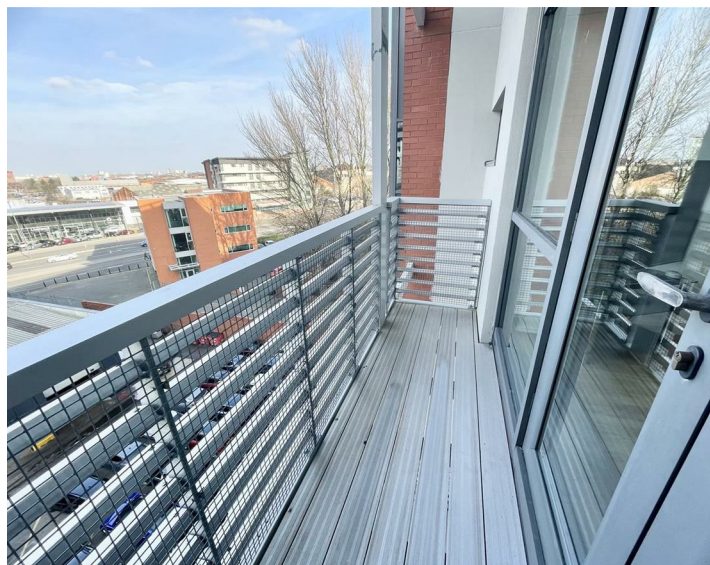


Apt 98 44 Pall Mall, Liverpool, L3 6EN
£975

www.
cityresidential
.co.uk



About the Property

AVAILABLE NOW is this well presented, two bedroom apartment in the sought after and highly regarded 44 Pall Mall Development.

The apartment is designed with a contemporary open plan living area to maximise space and benefits from having a balcony off the living area. The property briefly comprises; entrance hall, open plan living/dining area, two double bedrooms and a well appointed main bathroom.

This development is serviced by a lift to all floors.

EPC Rating - C. Council Tax Band - C. A deposit amount of £1,125.00 is payable upon moving in. Call us now to arrange a viewing.

- EPC Rating - C
- Council Tax Band - C
- Available Now



Energy Efficiency Rating

	Current	Potential
Very energy efficient - lower running costs		
(92 plus) A		
(81-91) B		
(69-80) C		
(55-68) D	54	55
(39-54) E		
(21-38) F		
(1-20) G		
Not energy efficient - higher running costs		
England & Wales	EU Directive 2002/91/EC	



City Residential
81/87 Victoria Street, The Old Haymarket, Liverpool L1 6DG
T: 0151 231 6100 F: 0151 231 6105
E: sales@cityresidential.co.uk



WWW.
cityresidential
.co.uk